



## THE WELSH INTERNATIONAL SUPER CUP ENGLAND & WALES JULY 17<sup>TH</sup> – JULY 27<sup>TH</sup> 2008

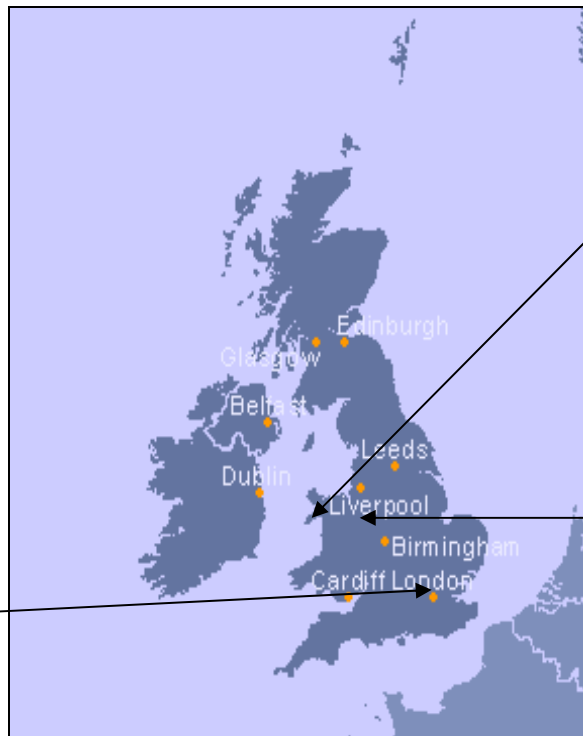
### Tour Overview:

After two days sightseeing in London, travel and play in the **'Welsh International Super Cup'** located in Aberystwyth, Wales.

One of the largest tournaments in the United Kingdom, it attracts teams from all over the world. Then travel onto the North West of England and a 'hot bed' of English football for a stay in the town of Chester and the chance to watch a live game.

### Tour Destination 1 - London

- After arrival in London spend two days sightseeing in the Capital City of England.
- Take a professional guided tour of London to see sights such as:
  - Buckingham Palace
  - Tower of London
  - London Bridge
  - Big Ben
  - London Eye
  - Trafalgar Square
  - Harrods etc.
- Ride on the British Airways 'London Eye'.
- Visit and tour 'Stamford Bridge' the home of **Chelsea FC**.



### Tour Destination 2 - Aberystwyth, Wales

- Participate in **'The Welsh International Super Cup'**
- Get involved in the opening ceremonies and enjoy the concert put on to open the ceremonies.
- Opportunity for coaching sessions provided throughout the tournament by Welsh National Staff Coaches.
- Guaranteed minimum of 4 games during your stay in Aberystwyth.

### Tour Destination 3 - Liverpool / Manchester / North Wales / Chester

- Travel through North Wales en route to the North West of England and Chester.
- Go and watch a live professional soccer game.
- Visit the 2,000 year old Roman town of Chester. One of only two English cities that still has an original Roman wall surrounding the city (the other being York).
- Flight home from Manchester Airport.



## **The Welsh International Super Cup England and Wales 2008**

---

WORLD CLASS COACHING and CHALLENGER WORLD TOURS have teamed up to offer The Welsh International Soccer Tournament (played at the beautiful University of Wales fields) is aimed at teams of all levels. It is based in the seaside resort town of Aberystwyth, Wales on the beautiful shores of Cardigan Bay. This great soccer event takes place over six days and players and coaches have the opportunity to rub shoulders with some of soccer's big time international teams.

In the past this location has welcomed teams such as Glasgow Celtic, Liverpool FC, Dinamo Kiev, FC Austria, Cruz Azul, Tahuichi Bolivia, Sao Paulo, Sparta Prague, and Glasgow Rangers. All competition takes place on spectacular fields unequalled anywhere in Great Britain. During the tournament Welsh FA certified coaches are available to undertake extra coaching sessions with your team.

### **Day 1: United States ~ London, England** Thursday July 17<sup>th</sup> 2008

Depart the United States on a scheduled transatlantic flight to London, England.

### **Day 2: Arrival in London – Tour of Stamford Bridge (home of Chelsea F.C.) – Hotel Check In** Friday July 18<sup>th</sup> 2008

Arrive in London (over night flight) at either London Heathrow or London Gatwick airport, board your private bus and transfer to the home of Chelsea Football Club for a tour of Stamford Bridge and surrounding Chelsea Village.

The Chelsea Football Club Tour will give you an amazing behind the scenes look of one of the largest football stadia in London with a fun, exciting and interactive experience. The fully guided tour will take you into the refurbished home dressing rooms, allow a fascinating insight into how the squad prepares for home games and let you view your favorite player's kit for an unforgettable photo opportunity. Whether it's England heroes John Terry and Frank Lampard, flying Dutchman Arjen Robben or Goalkeeper Peter Cech, you'll be spoilt for choice!



Following the tour of the stadium spend time in the Chelsea Football Club museum. This museum was opened as 'The Centenary Museum', built to commemorate the centenary year of 'The Blues'. This fantastic, all new visitor attraction pays tribute to the past 100 years of the Stamford Bridge side, with a host of exhibits, sights and sounds for Chelsea fans, young and old to enjoy.

Following your day in London transfer to your 3-4 stars London based hotel. This hotel in the past has been the 'Britannia International hotel' located in Canary Wharf, which is famous as the financial district of London.

Dinner will be taken at the hotel followed by a tour meeting and then early to bed.

### **Day 3: Professional sightseeing tour of the Capital – Free afternoon in London – London Eye** Saturday July 19<sup>th</sup> 2008

Breakfast will be served at the hotel,

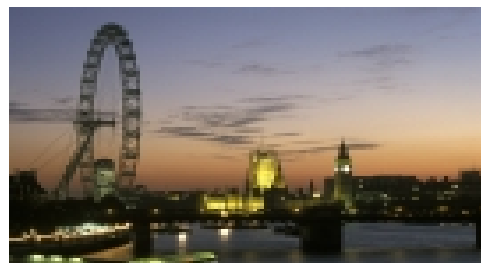


We will then take in a guided tour of London. A professional 'Blue Badge guide' leads this tour starting at St. Paul's Cathedral and the Tower Of London (and Tower Bridge) and then to the embankment of the River Thames and the 'London Eye'. The route will cover Big Ben, The Houses of Parliament, Westminster Abbey, Downing Street, Horse Guard Parade, The Royal Mall, Buckingham Palace and Trafalgar Square.

Following lunch in the area spend a free afternoon shopping at Harrods and the famous Knightsbridge District in London, sightseeing back in the Embankment area of London or head off to Lilywhites, which is a six story mega shopping store and is one of the largest sports/soccer retailers in Great Britain.

In the early evening we will take in the London Eye. The British Airways London Eye is the world's largest observation wheel. Take in over 55 of London's most famous landmarks in just 30 minutes!

Dinner will be served back at the hotel.



### **Day 4: London – Aberystwyth, Mid Wales (Welsh International Super Cup Tournament opening Ceremony)** Sunday July 20<sup>th</sup> 2008

Breakfast at the hotel and then check out and head out of London towards Mid Wales and ultimately Aberystwyth.

We will arrive in Aberystwyth, Mid Wales mid/late afternoon and settle into the University of Wales accommodation.



Following dinner at the University cafeteria attend the Tournament opening ceremonies. All teams begin the ceremony at the University and are paraded through the town led by a local marching band. They then conclude at the Aberystwyth Town Football Stadium in the middle of Aberystwyth. Here your team is presented to other tournament participants from around the world and a waiting stadium of fans. Then stay and watch a live concert put on by the Tournament.

All rooms at the University are single rooms with en-suite facilities and breakfast, lunch and dinner are provided each day in the University Cafeteria which is a 'cultural melting pot' with players, coaches and teams represented from all over the world.

**Day 5 - 8: The Welsh International Super Cup – Aberystwyth, Mid Wales (Tournament Games)**  
Monday July 21<sup>st</sup> – Thursday July 24<sup>th</sup> 2008



**The Welsh International Super Cup - Tournament Play.**

Participate in a truly international event with teams having been represented in past years from England, Wales, Scotland, and Northern Ireland as well as representatives from Ireland, Australia, Malta, Canada, and Germany.

NOTE: The tournament structure is different in each division with all teams playing usually one game per day throughout the event (two games per day in the 8v8 format).

- Coaching sessions are available throughout the event by on site by members of the Welsh National Coaching Staff.
- The competition is officially sanctioned by the Football Association, UEFA and FIFA.
- All referees will be registered with the Football Association.
- Games will be 25/35 minutes each way according to player's age category.
- All the games are played at Wales University's magnificent football park located in Aberystwyth. A location used by the Football Association of Wales for its range of top coaching courses as favored by professional clubs.

**Day 9: The Welsh International Super Cup (Tournament Finals) – Chester**  
Friday July 25<sup>th</sup> 2008

Breakfast in the University Cafeteria, followed by tournament finals and award presentations.

Then depart for the North West of England and Chester. Arrive at Chester and check into our accommodation located at Chester College. Accommodation will be half board (breakfast and dinner) and is located within a few minutes (walk) from the city center and has excellent facilities for daily practices including both grass and astro-turf fields. After settling into single rooms, with en-suite bathrooms, the players may take a leisurely stroll into town to explore the cultural surroundings. Chester is a 2,000 year old City and one of only two cities in England (the other being York) that is still surrounded by its original Roman walls.



Evening meal will be served at the College followed by an evening stroll into the city of Chester.

**Day 10: Sightseeing in Chester - Pre Season Professional Game**  
Saturday July 26<sup>th</sup> 2008

Following breakfast we will walk into Chester for a morning of sightseeing, shopping, boating on the River Dee or relaxation in this beautiful 2,000 year old historical Roman city.



Players and parents can walk the entire length of the city walls, (a 2 mile jaunt), spend time on the banks of the River Dee, or spend time shopping in the unique two-tier Rows galleries.

In the afternoon we will go and watch a live professional preseason match involving one of the North West clubs. Experience the excitement of live soccer played in one of the amazing British soccer stadiums. (Actual teams will be dependant upon availability and schedules).

Dinner will be served back at the College following the game.

**Day 11: Return Flight to the United States**  
Sunday July 27<sup>th</sup> 2008

Following breakfast at the College, check out and transfer to Manchester airport for return flight back to the United States.

**Please note:**

This is a sample itinerary and actual events may vary or can tailored dependent upon certain requests from your group, please be aware that this alteration to the itinerary may in some way alter the final cost for the tour.

World Class Coaching and Challenger World Tours may in its absolute discretion make changes to or cancel any section of the above mentioned soccer tour should circumstances beyond the company's control make such actions necessary. These include: inappropriate weather conditions, schedule changes, advertised facilities not available, transportation problems and failure of other suppliers of services or goods to the company. If the above occurs then Challenger World Tours will attempt to substitute the changed section of the tour to an equal or better standard.

**Challenger Flight Option:**

All groups have the option to book their own flights or to book their travel arrangements through World Class Coaching and Challenger World Tours. We will work with our travel agent to get you the lowest group airline rate we can. These prices will obviously be subject to availability as well as city of departure and date of travel etc. Please be aware that if booking your own flights then you will be responsible for all ground transportation until meeting up with the group in the UK.



## **WORLD CLASS COACHING 2008 WELSH INTERNATIONAL SUPER CUP TOURNAMENT**

- 11-day tour: July 17<sup>th</sup> through July 27<sup>th</sup> 2008.
- London, Aberystwyth (Wales), Chester, Liverpool & Manchester.
- Price based on a minimum of 20 paying travelers:

**TOUR COST = \$1,795 USD per Traveler**

### **WHAT IS INCLUDED IN YOUR TOUR PACKAGE?**

- FREE place for the Coach, Team Manager or Team Administrator, as selected by team (This includes land package and transatlantic flight). A 2<sup>nd</sup> FREE place (land package only) will be awarded for reaching 35+ paying travelers.
- 2 night's at a 3-4 star London hotel (half board - breakfast and dinner).
- 5 night's full board (full board - breakfast, lunch and dinner) college accommodations at Wales University.
- 2 night's half board (half board - breakfast and dinner) dormitory facilities at Chester College.
- Private chartered bus while in London, Wales and Chester/Manchester.
- Full sight seeing (blue badge) tour of London by professional tour guide.
- Entrance and tour of stadium and museum at 'Stamford Bridge' – The home of Chelsea Football Club.
- Entrance onto the British Airways London Eye.
- Entry Fees into the 'Welsh International Super Cup Tournament'.
- Shuttle bus service to and from tournament games.
- Entrance into a professional football match (actual teams will be dependant upon availability).
- Opportunities to visit London, Aberystwyth, Liverpool, Manchester, Chester and North Wales.
- Travel Insurance included for all travelers with Trip Cancellation and Trip Interruption included up to \$500 per traveler value with option to upgrade.  
~ Travel Insurance includes Emergency Evacuation up to \$100,000 and Travel Accident and Sickness Medical Expense up to \$10,000 per traveler.
- Challenger Travel Package (tour t-shirt, sack pack and travel binder).
- Challenger Travel Director to accompany the group throughout the tour.

### **WHAT IS NOT INCLUDED IN YOUR TOUR PACKAGE?**

- Transatlantic Airfares and additional departure taxes.
- Lunches outside of tournament play (suggest \$15 per day).
- Optional activities/excursions not listed in above itinerary.

All UK costs are calculated in British sterling at a present exchange rate of \$1.90 per British pound. Please be aware that certain costs may alter due to a change in this rate and thus again affect the final cost of the tour.

**WORLD CLASS COACHING**  
15004 Buena Vista Drive, Leawood, KS 66334  
Phone: 913-402-0030 Fax: 913-402-0029  
Email: [mikesaif@worldclasscoaching.com](mailto:mikesaif@worldclasscoaching.com)  
Website: [www.worldclasscoaching.com](http://www.worldclasscoaching.com)